

TREES AND YOUR POWER SUPPLY

An Introduction to the Electricity (Hazards from Trees) Regulations 2003

Centralines Limited is a community-owned and operated electricity lines business, serving the Central Hawke's Bay region. Centralines is responsible for delivering a reliable power supply and ensuring the safety of its community around electricity.

Trees growing through, or close to, power lines are a threat to this as they pose a major safety hazard and cause around 20% of unplanned power cuts. In high winds, trees and their debris can also cause power cuts by disrupting the flow of electricity through the power line or damaging electrical equipment.

Managing trees near power lines is an important part of being a tree owner. Take some time to learn more about the danger of trees near power lines and what your responsibilities are as a tree owner.

YOU DON'T HAVE TO TOUCH A POWER LINE TO RECEIVE A SHOCK!

Trees growing close to, or through, power lines are dangerous because they create a potential path for electricity to travel to the ground.

People that come into contact with this path (by touching, climbing, trimming or cutting down the trees) put themselves at serious risk of being electrocuted or receiving significant electrical burns.

In dry weather conditions, trees near power lines are also a serious fire risk.

RIGHT TREE, RIGHT PLACE

Prevent Future Tree Issues by Choosing your Tree Carefully Before Planting

Centralines recommends that you do not plant trees near power lines. However, if you do decide to plant a tree anywhere near power lines, please choose your tree carefully.

As a tree owner, you are responsible for the costs of keeping trees near power lines trimmed and outside of the Growth Limit Zone. As outlined in the Electricity (Hazards from Trees) Regulations 2003, tree owners could face penalties for failing to keep trees clear of power lines and may be responsible for the costs of damage to power lines or equipment, caused by a tree.

Check out our website for a full list of trees suitable for planting under, or anywhere near, power lines at:

WWW.CENTRALINES.CO.NZ/TREES_AND_LINES

MANAGING TREES NEAR POWER LINES

Cutting and trimming trees in the vicinity of power lines is dangerous. Touching a live power line or a tree close to the line can result in serious injury, or even death by electrocution.

Responsibility

According to the Regulations, the tree owner is responsible for all aspects of maintaining trees, to ensure they do not encroach on either Centralines-owned power lines or private service lines.

Trimming Trees Near Power Lines

Under the Regulations, no person is permitted within four metres of a power line without prior approval from Centralines.

Therefore, only Centralines-approved contractors can be used to safely trim or cut down trees growing within four metres of any power lines. Request a quote to have your trees trimmed by Centralines' certified team of arborists by calling us on (06) 858 7770.

Felling Trees Near Power Lines

Check there is a distance of at least twice the height of the trees between the tree and any nearby power lines. If it is within this distance you will need to use a Centralines-approved contractor, or you could be liable for the cost of any damage to our network if the tree lands on our lines - not to mention the potential safety risk of coming into contact with live lines!

Trimming Trees Near Power Lines is also a Danger to your Bank Balance!

As outlined in the Regulations, tree owners could face penalties for failing to keep trees clear of power lines. The cost of repairing power lines and other equipment damaged by trees is significant – and could be passed on to you!

KNOWING WHEN IT'S TIME TO TRIM OR REMOVE TREES

The Regulations state exactly how close trees may come to power lines before cutting or trimming is required. These zones are known as the Growth Limit Zone and the Notice Zone.

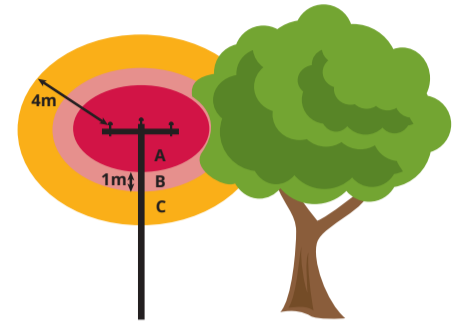
Growth Limit Zone

This zone is the space around the power line (measured in metres) where trees must not encroach, even in windy or stormy conditions.

The Notice Zone

This zone is one metre beyond the Growth Limit Zone.

If your trees are encroaching on the Growth Limit Zone, you will be issued with one of two notices, either a First Cut or Trim Notice or a Cut or Trim Notice.



A Growth Limit Zone **B** Notice Zone **C** Controlled Access Zone

OVERHEAD LINE	A (Growth Limit Zone)	B (Notice Zone)
33kV - High Voltage	2.5 metres	3.5 metres
11kV - High Voltage	1.6 metres	2.6 metres
400V/230V - Low Voltage	0.5 metres	1.5 metres

C The Controlled Access Zone is four metres from any conductor. No unapproved person may enter this zone and if any part of a tree is within this zone a Centralines-approved contractor must be used to cut or trim that tree.

First Cut or Trim

Centralines may cover the cost to perform the first cut or trim on a tree encroaching on a power line, if the following conditions apply, or are met:

- According to Centralines records, the trees have not been subject to a previous cut or trim at our cost,
- the trees do not form a shelterbelt,
- the trees have not been the subject of a previous agreement, and
- the tree owner grants access to the site.

If all these conditions apply, Centralines will issue you with a First Cut or Trim Notice and perform the work at no charge to you.

Subsequent to this, the responsibility for on-going tree clearance work and associated costs will lie with the tree owner.

Cut or Trim Notice

If Centralines becomes aware of a tree encroaching on the Growth Limit Zone on your property, a Cut or Trim Notice will be given in writing to the tree owner.

Further information on First Cut or Trim Notices and Cut or Trim Notices can be found on Centralines' website at:

WWW.CENTRALINES.CO.NZ/TREES_AND_LINES

TREE OWNERS COULD INCUR HEAVY FINES

Under the Regulations, a tree owner who has been given a Cut or Trim Notice and fails to cut or trim the tree so that it does not encroach the Notice Zone, or fails to advise Centralines of the time and location of cutting or trimming of the tree, may be liable on summary conviction to a fine not exceeding \$10,000 and, if the offence is a continuing one, a further fine not exceeding \$500 for every day the offence continues.

No proceedings may be taken if the tree owner has applied for a dispensation from Centralines, or where a dispute with respect to the tree concerned has been referred to an arbitrator.

For more information about trees and your power supply, or to read the full Electricity (Hazards from Trees) Regulations 2003, visit:

www.centralines.co.nz or call (06) 858 7770

