



TREES AND YOUR POWER SUPPLY

New Regulations Provide for Heavy Fines

A tree owner who has been given a Cut or Trim Notice and fails to cut or trim the tree so that it does not encroach the Growth Limit Zone, or fails to advise Centralines of the time and locations of cutting or trimming of the tree, may be liable on summary conviction to a fine not exceeding \$10,000 and if the offence is a continuing one a further fine not exceeding \$500 for every day which the offence continues.

WHEN TREES GROW TOO CLOSE TO POWER LINES THEY CAN CAUSE A VARIETY OF DANGERS

ELECTROCUTION

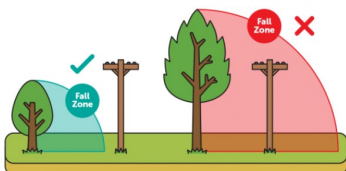
Touching, trimming or climbing a tree that is in contact with power lines puts you at risk.

FIRE

The electrical current running through power lines can cause fires when the wires rub on trees/branches.

POWER CUTS

Trees growing beside and over power lines can cause outages during wild weather.



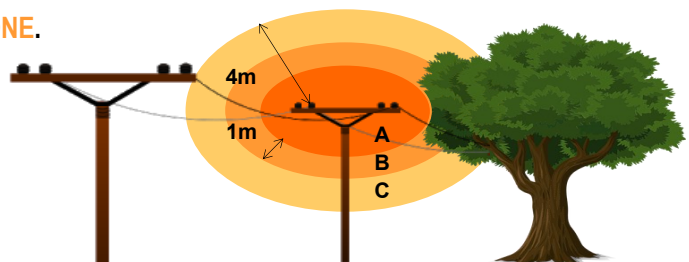
Felling or trimming trees which are in contact with powerlines or that can make contact with powerlines, is **DANGEROUS**

Touching a tree or branch that is in contact with powerlines can bring serious injuries or loss of life.

KNOWING WHEN ITS TIME TO TRIM OR REMOVE TREES

ZONES The Electricity (Hazards From Trees) Regulations 2003 state exactly how close trees may come to power lines before cutting or trimming is required. These measurements or ZONES are known as the **GROWTH LIMIT ZONE** and the

NOTICE ZONE.



GROWTH LIMIT ZONE (A)

The space around the power line (in metres) where trees must not encroach even in windy or stormy conditions.

NOTICE ZONE (B)

This is one metre beyond the GROWTH LIMIT ZONE. You may be warned of your tree encroaching the NOTICE ZONE which must not encroach the GROWTH LIMIT ZONE.

| OVERHEAD LINE | A (Growth Limit Zone) | B (Notice Zone) |
|-------------------------|-----------------------|-----------------|
| 33kV - High Voltage | 2.5 metres | 3.5 metres |
| 11kV - High Voltage | 1.6 metres | 2.6 metres |
| 400V/230V - Low Voltage | 0.5 metres | 1.5 metres |

C The Controlled Access Zone is 4 metres from any conductor. No unapproved person may enter this zone and if any part of a tree is within this zone a Centralines-approved contractor must be used to cut or trim that tree.

For more information about trees and your power supply, or to read the full Electricity (Hazards from Trees) Regulations 2003, visit:

www.centralines.co.nz or call 0800 667 693



OUR PEOPLE | OUR POWER